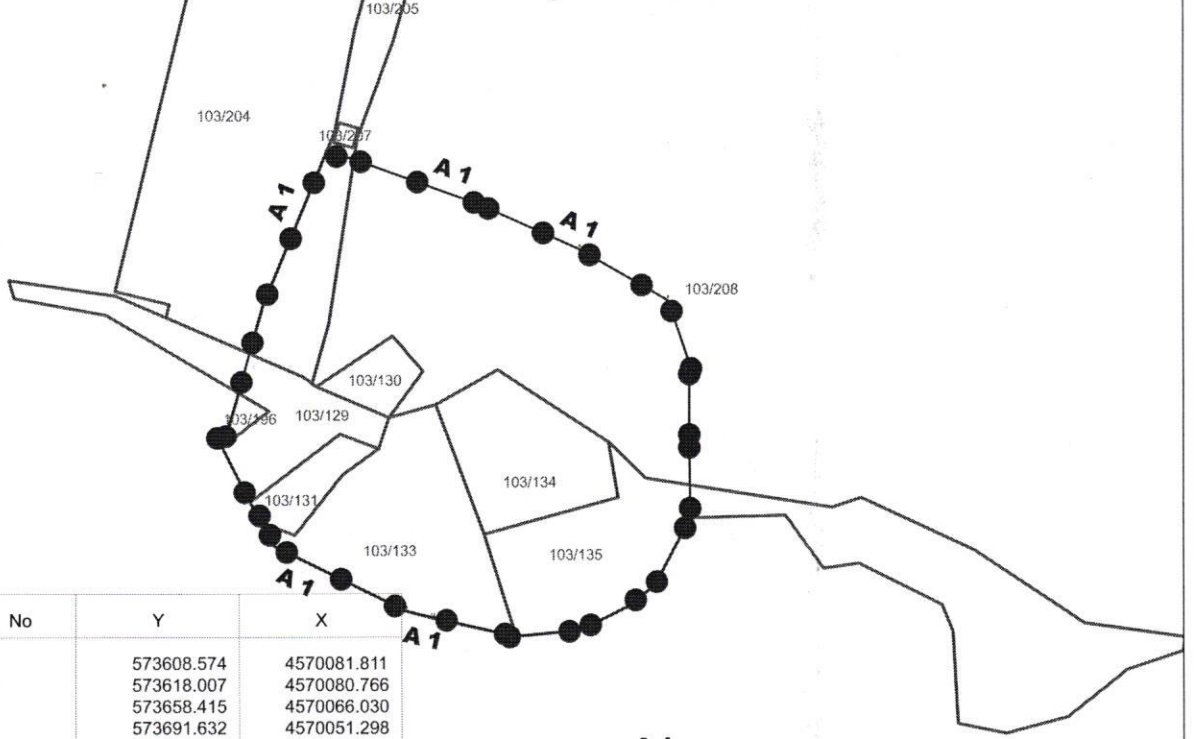


ARDAHAN İLİ HANAK İLÇESİ YÜNBÜKEN KÖYÜNDEKİ  
ALABALIK DERESİ PASTORAL YERLEŞİMİNİN 1.DERECE ARKOLOJİK SİT SINIRI



Nokta No	Y	X
1	573608.574	4570081.811
2	573618.007	4570080.766
3	573658.415	4570066.030
4	573691.632	4570051.298
5	573720.554	4570034.726
6	573727.371	4570014.439
7	573727.371	4569990.619
8	573727.662	4569964.219
8	573716.174	4569942.710
9	573706.805	4569935.556
10	573691.760	4569928.126
11	573670.556	4569926.196
12	573643.387	4569932.124
13	573634.405	4569934.513
14	573591.540	4569955.447
15	573589.324	4569962.291
16	573583.890	4569969.415
17	573574.858	4569987.219
18	573577.538	4569996.005
19	573580.218	4570004.791
20	573583.832	4570017.562
21	573588.300	4570033.349

ED-50\_3\_42

KARS K.V.K.B.K.'nun... 28.03.2022

Tarih ve ... 3584 ... sayılı karar ekidir.



Gökhan CAN  
Harita Mühendisi